

MONTHLY MEMBERSHIP PROGRESS REPORT

District 2 A1

Results as of: 6/30/2024

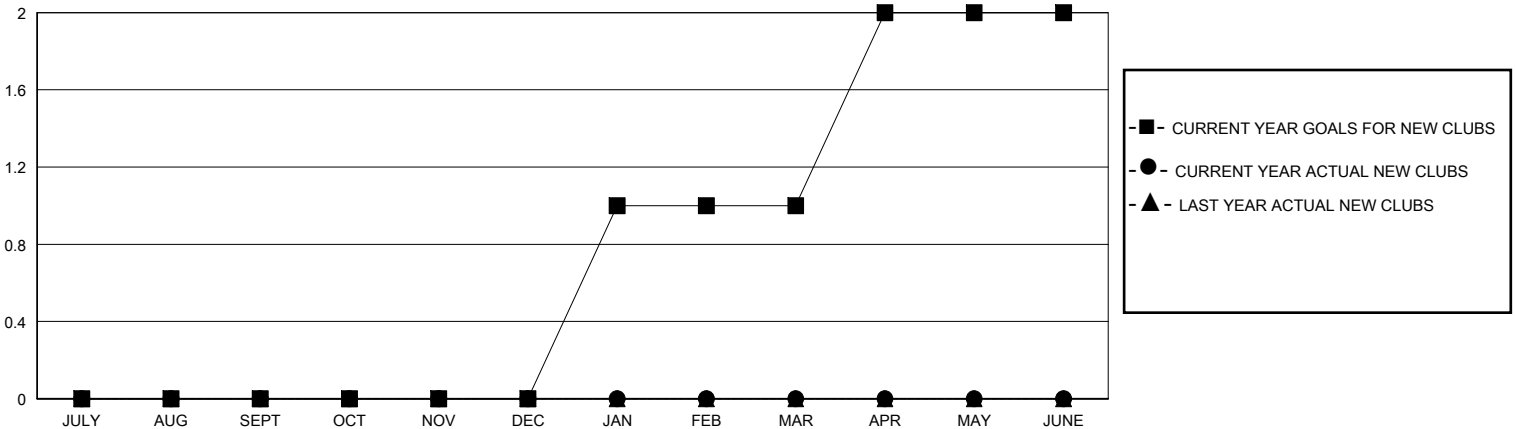
GMT:

LOCATION TEXAS

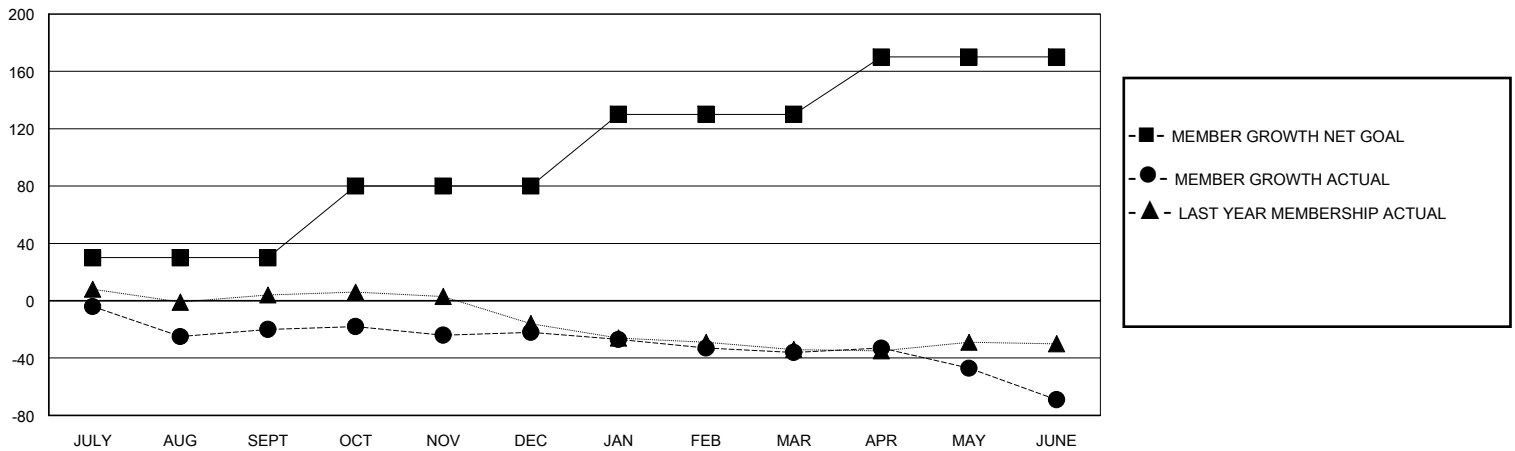
GMT CA

Clubs				Members			
RESULTS FOR 2023-2024				RESULTS FOR 2023-2024			
QUARTER	NEW CLUB GOAL	NEW CLUBS	DROPPED CLUBS	QUARTER	MEMBER GROWTH NET GOAL	MEMBER GROWTH ACTUAL	DROPPED MEMBERS ACTUAL (including transfers)
JULY/AUG/SEPT	0	0	0	JULY/AUG/SEPT	30	39	55
OCT/NOV/DEC	0	0	0	OCT/NOV/DEC	50	18	19
JAN/FEB/MAR	1	0	0	JAN/FEB/MAR	50	23	32
APR/MAY/JUNE	1	0	1	APR/MAY/JUNE	40	16	49

GOALS AND ACTUAL NEW CLUBS CUMULATIVE



GOALS AND ACTUAL MEMBERS CUMULATIVE



DROPPED CLUBS: 1

23 CLUBS OF 39 ADDED 1 OR MORE NEW MEMBERS

GENDER DISTRIBUTION

MALE 612 (65.11%)
FEMALE 328 (34.89%)

DROPPED MEMBERS

DECEASED	12
CLUB CANCELLED	8
OTHER	135
TOTAL	155

[CLICK HERE FOR CUMULATIVE MEMBERSHIP DATA](#)

TOTAL FAMILY UNIT MEMBERS	102
FAMILY MEMBERS PAYING HALF DUES	52